

# Introduction

**Thank you** for purchasing a DEL Liftgate. Your liftgate is an example of the finest engineering in the industry and, with proper care and operation, will serve your needs for years. Not only have you purchased one of our liftgates; we feel you have entered into a partnership with us.

To begin our partnership we welcome you to the DEL Liftgates Team and assure you your continuous satisfaction with our product is most important to us. Our **Quick Response TEAM** at DEL Liftgates stands ready to provide you with fast action when you need sales, parts, or technical assistance. You can call our customer service department Monday - Friday 8a.m. to 5 p.m. Eastern Time or reach us 24 hours a day, 7 days a week through our internet home page ([www.liftgate.com](http://www.liftgate.com)) or voice message system. Providing quality, value, and service to our customers is what our business is all about.

Read this manual carefully to learn how to operate and care for your liftgate properly. Maintenance (other than the simple routine maintenance we ask you to perform within this manual), inspections, and repairs must be completed by a **DEL Liftgate Authorized Service Center only**.

If you do not know who the Authorized Service Center in your area is, please contact us at:

**DEL Liftgates, Inc.**

P. O. Box 6126

190 Lewis Street

Buffalo, NY 14240-6126

Phone: (800) 289-1335 or (716) 853-7994

Fax: (716) 854-5424

<http://www.liftgate.com>

e-mail: Service @liftgate.com

# Table Of Contents

<b>Description</b>	<b>Page</b>
<u>Introduction</u> .....	1
<u>Table of Contents</u> .....	2
<u>Scope of this Manual</u> .....	4
<u>Description of DA Series Liftgates</u> .....	6
<u>Theory of Operation</u> .....	7
<u>Design Detail</u> .....	8
<u>Special Features</u> .....	9
<u>Limits of Operation &amp; Use</u> .....	10
<u>Abnormal &amp; Unsafe Practices</u> .....	12
<u>Safety</u> .....	13
<u>Activating Liftgate</u> .....	17
<u>Normal Operating Procedures</u>	
Opening the Platform .....	18

# Table Of Contents

---

## Proper Cargo Loading Procedures

Preferred Method .....	21
Single Operator Method .....	25

Closing and Storing Platform .....	29
------------------------------------	----

<u>Deactivating Liftgate</u> .....	31
------------------------------------	----

## Preventive Maintenance

Essential Maintenance Inspections .....	32
Daily Overall Inspection .....	33
Sample Daily Chart .....	35

<u>Liftgate Warranty Procedure</u> .....	38
--	----

<u>Getting Help</u> .....	39
---------------------------	----

<u>Ordering Parts</u> .....	40
-----------------------------	----

# Scope Of This Manual

DEL Liftgates, Inc. has designed this manual to illustrate the steps needed for the basic operation of our DA Series liftgates. It also provides safety information and simple preventive maintenance tips.

***NOTE: This manual is not intended for use as a repair or troubleshooting guide.***

This manual has been designed for use in conjunction with the **DA Series “Fleet Boss” liftgate only**. These are tuck-away style liftgates with capacities of 2500 lb. and 3000 lb. To determine the type of liftgate you have:

- 1) *Refer to the serial number tag on the liftgate. The area labeled “Model Number”(see page 5 of this manual) will have a “DA” denotation in the prefix of the model number if it is a DA series liftgate;*
- 2) *Ask your employer or lessor;*
- 3) *Call your Authorized Service Center for assistance;*
- 4) *Call us for assistance at **1-800-289-1335**. You can also contact us by fax **716-854-5424**, or on the internet - **<http://www.liftgate.com>***

If you are experiencing difficulty or are in need of repair, contact the DEL Liftgates Factory for information on the experienced and trained DEL Liftgate Authorized Service Center in your area.

***Replacement manuals are available, just call us & order part # 25424.***

# Scope Of This Manual

---

## Model Number

The code and model numbers of a liftgate are references to its size, type and capacity.

DA 25 85 42  
1 2 3 4



### 1. Liftgate type

DA = Tuck-away Style Liftgate

### 2. Weight capacity

25 = 2500 lb. capacity

30 = 3000 lb. capacity

### 3. Width of platform

*(from outside of platform to outside of platform)*

72 = 72" width of platform

85 = 85" width of platform

### 4. Depth of platform

*(not including ramp)*

32 = 32" of platform loading area

42 = 42" of platform loading area

# **DA Series Liftgate Description**

---

The DA Series liftgate is an tuck-away style liftgate. This style liftgate is available in the capacities of 2,500 or 3,000 lbs. Tuck-away style liftgates are made of two platform sections which fold and tuck completely under the rear of the truck.

This liftgate should be used to transport stable loads. The platform is **not** a level ride. Use increased caution when operating.

This model is not capable of raising above the floor of the truck.

## **Important Safety Features**

- Pressure compensated flow valve
- Treadplate platform
- Platform safety lock
- Heavy duty platform hinge
- Warning decals and manuals

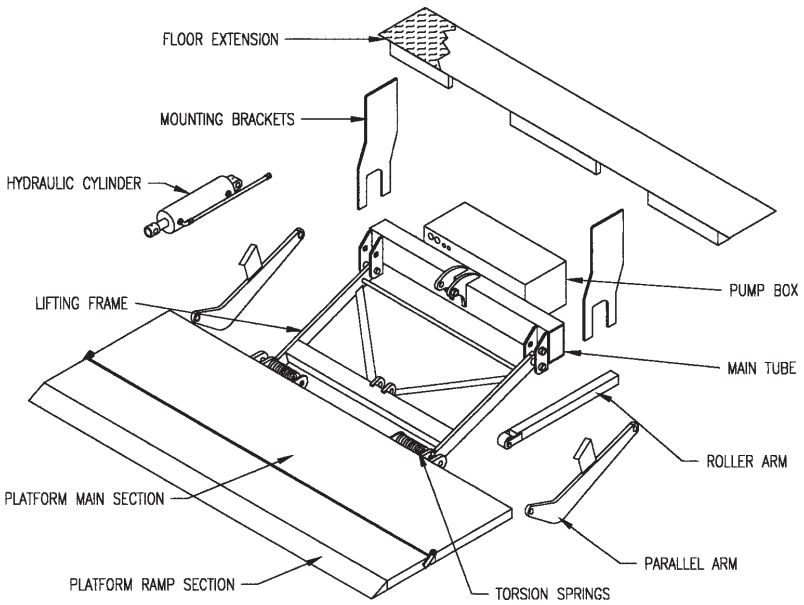
# Theory of Operation

---

The DA tuck-away style liftgate is designed to lift cargo from the ground to the bed of the truck, or vice-versa. This style liftgate operates using a direct lift hydraulic system. A 12 volt battery provides power to the hydraulic power unit which in turn supplies hydraulic fluid to the hydraulic cylinder. Upon storage, the liftgate platform folds in upon itself and “tucks away” under the rear of the truck.

# Design Detail

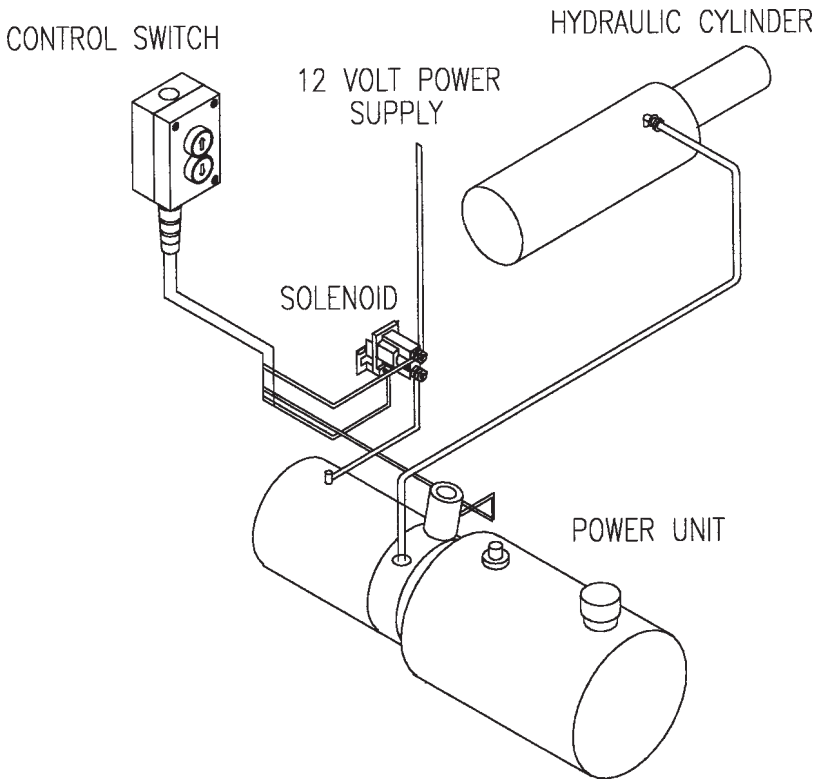
This is a drawing of a DA Series liftgate with descriptions of the common parts.



# Design Detail

---

This is a general drawing of the power system for most DA style liftgates.



# Special Features

We have developed the new low maintenance features for our liftgates by listening to you - our customers. Our low maintenance liftgates are value engineered to reduce maintenance cost and downtime while increasing productivity. Our special features include:

***Maintenance Free Bushings*** at all major hinge points - These bushings replace grease fittings that were traditionally high maintenance items. These new bushings significantly reduce maintenance cost and downtime.

***Rubber Sealed Push Button Control*** - In order to help prevent freezing and obstacles from jamming the control buttons, all liftgates feature a control switch with rubber sealed push buttons.

***Pressure Compensated Flow Control Valve*** - This valve ensures that the platform descent is controlled at any load capacity or in the event of a damaged hose..

***Steel Pump Box Enclosure*** - Protect hydraulic power unit from road debris and weather damage.

***Reinforced Floor Extension*** - 1/4" thick reinforced steel prevents loading dock damage.

***Zinc Chromate Plated Hinge Pins*** - To resist corrosion.

We are always interested in hearing your comments and suggestions especially to improve our products, please contact us at **1-800-289-1335** or on our internet page ([www.liftgate.com](http://www.liftgate.com)) anytime. If we are not there leave a message and we will get back to you as soon as possible.

# Limits of Operation & Use

## SAFETY INSTRUCTIONS

**Before operating liftgate be sure to understand these instructions below:**

1. Improper operation of this lift can result in serious personal injury. **DO NOT OPERATE** unless you have been properly instructed and have read, and are familiar with, the operating instructions. If you do not have a copy of the instructions please obtain them from your employer, distributor, or lessor, as appropriate, before you attempt to operate the lift.
2. Be certain the vehicle is properly and securely braked before using the lift.
3. Always inspect this lift for maintenance or damage before using it. If there are signs of improper maintenance, damage to vital parts, or slippery platform surface, do not use the lift. **DO NOT** attempt your own repairs, unless you are specifically trained.
4. **DO NOT OVERLOAD.** See Maximum Capacity Load Decal for the rated load. Remember that this limit applies to both raising and lowering operations.
5. Each load should be placed in a stable position as near as possible to the **CENTER** of the platform.

# Limits of Operation & Use

---

## SAFETY INSTRUCTIONS

6. Keep people clear of liftgate while operating. **NEVER STAND** in or move through or allow anyone else to stand in or move through the area in which the lift may operate or into which an upset load might fall.
  
7. **DO NOT RIDE** the liftgate. This is **NOT** a passenger lift. Unstable loads or failure of the liftgate would endanger you. *This liftgate is not equipped with a back-up system to prevent the liftgate from falling in the event of a failure.*
  
8. Ensure all decals are legible and in their correct locations. If you require replacement decals contact the **DEL Liftgate Inc.** Read all safety decals before operating the liftgate.

# Abnormal & Unsafe Practices

## **WARNING**

Improper use of the liftgate may result in severe damage to liftgate and/or severe personal injury or death. Never use liftgate for anything other than its designed use of loading/unloading cargo.

The following are unsafe practices that may cause hidden damage to the liftgate creating the risk of serious personal injury or death:

- Using the liftgate as a jack
- Using the liftgate to pull, push, or tow objects
- Using force of the hydraulic system to bend, shear, or break objects
- Using the liftgate to plow snow
- Driving a forklift over the liftgate
- Driving the truck with platform open

The following unsafe practices may result in serious personal injury or death:

- Riding the liftgate
- Using the platform as a step into the truck bed

# Safety

**DANGER, WARNING, and CAUTION** are “signal words” that identify the level of risk or hazard involved in an operation or step. The signal word will accompany a “SAFETY ALERT SYMBOL”



Immediate hazards which **WILL** result in severe personal injury or death.



**DANGER**

Hazards or unsafe practices which **COULD** result in severe personal injury or death.



**WARNING**

Hazards or unsafe practices which **COULD** result in minor personal injury or product or property damage.



**CAUTION**

# Safety

---

## *Operate Safely*

- ⇒ Run liftgate through a full cycle before operating every day; inspect liftgate for missing or loosened fasteners, broken welds, signs of overload; and check that all decals are in their proper place and legible.
- ⇒ Clear area of any objects that may be pinched or crushed. Keep people out of work area. Stop operating liftgate if anyone enters the area.
- ⇒ If you hit anything with the liftgate - STOP immediately! Remove object and inspect damage. Make any repairs before you operate liftgate again.
- ⇒ DO NOT leave liftgate activated or platform open when unattended.
- ⇒ DO NOT allow an untrained person to operate the liftgate.

## *Help Prevent Serious Injury Or Fatal Accidents*

- ⇒ DO NOT ride the liftgate at anytime or use platform when it is not on the ground as a step into the truck. Riders risk the chance of being thrown off the liftgate if it fails.
- ⇒ Disconnect power to the liftgate after every use using the Master Disconnect Switch in the cab of the truck.

# Safety

---

- ⇒ DO NOT run a forklift or other heavy machinery over the platform at anytime.
- ⇒ DO NOT use the liftgate for any other reason than loading or unloading cargo.
- ⇒ DO NOT operate the liftgate if you are under the influence of drugs or alcohol.

## *Loading And Unloading Safely*

- ⇒ Be sure to operate liftgate on a level surface.
- ⇒ When backing truck to loading dock, do not hit into dock. Have a second person outside the truck directing you.

## *Using The Control Switch*

- ⇒ DO NOT depress the “UP” button for any longer than necessary to perform the desired function. Release the button immediately once the platform reaches its full height. Failure to release button immediately may cause hidden damage to liftgate components causing the liftgate to fail unexpectedly.
- ⇒ DO NOT “jerk” the liftgate by pressing the “Up/Down” buttons too quickly. The sudden movement may cause the cargo to become unstable and/ or fall.

# Activating Liftgate

To provide power to the liftgate;

## **WARNING**

Improper use of the liftgate may result in serious injury or death. **DO NOT** operate this liftgate without being properly instructed and understand this manual.

*Using the 135 AMP Circuit Breaker:*

### **Step 1**

**SLIDE** the Reset Lever **Upwards** until it snaps into position.



*Using the Master Disconnect Switch:*

### **Step 2**

**TURN** the knob to the **ON** position.



# Normal Operating Procedures

---

## Opening Liftgate Platform;

### **WARNING**

Platform may crush or pinch. Keep people clear of liftgate while operating.



#### **Step 1**

PUSH release handle “DOWN” to free the safety hook.

*If handle is hard to move, press the “UP” button for a second to lift the platform out of its rest position on hook.*



#### **Step 2**

Continue holding handle (until the platform bracket clears the safety hook) while pressing the “DOWN” button on the two button switch located on the outside of the truck to lower the platform.

# Normal Operating Procedures

---

## Step 3

Using the platform handle, PULL open the main section of the platform until it reaches the horizontal position.



## Step 4

Raise the platform to a comfortable lifting position and unfold the ramp extension from on top of the main section of the platform.



## Step 5

Begin loading the truck. See “Proper Cargo Handling Procedures” under **Normal Operating Procedures** (pages 20-30).

# Normal Operating Procedures

---

## Proper Cargo Handling Procedures;



### WARNING

Riding liftgate may result in severe personal injury or death. Do not ride platform, use the provided methods to enter the truck.

To avoid riding the liftgate, two operating procedure methods have been designed to fit your particular situation. They are as follows:

***Preferred Method:*** With this method, you will have an operator and an assistant to load and unload the truck. The operator is on the ground loading and the assistant is inside the truck unloading,

***Single Operator Method:*** With this method, you will only use one operator to load and unload the truck. This procedure requires you to have two switches; one mounted inside the truck and one mounted outside the truck.

*(Contact the DEL Liftgate Factory if you do not have a second switch.)*

# Normal Operating Procedures

---

## Proper Cargo Handling Procedures;

### *Preferred Method:*



### **WARNING**

Platform may crush or pinch. Keep people clear of liftgate when operating.

#### **Step 1**

Open the platform. See “Opening Liftgate Platform” under **Normal Operating Procedures (Pages 18-19)**.

#### **Step 2**

With platform on the ground, the assistant enters the truck by using the provided methods.



# Normal Operating Procedures

---

## **WARNING**

Cargo placed near the edge of the platform may fall and/or cause excessive wear to the lifting components. Place cargo in the center of the platform to reduce risk of falling and evenly distribute cargo weight.



### **Step 3**

The operator loads the platform, placing cargo in the center and making sure it is stable. Secure load to prevent cargo from falling while platform is moving.

## **CAUTION**

Depressing the "UP" button too long may result in personal injury & damage lifting components. Release button immediately once platform reaches the top.



### **Step 4**

The operator raises the platform to the bed of the truck by pressing the "UP" button on the two button switch located on the outside of the truck.

# Normal Operating Procedures

---

## Step 5

The assistant now unloads cargo from platform into the truck.



## Step 6

The assistant advises the operator to lower platform to the ground.



## Step 7

Once use of the liftgate is complete, with the platform on the ground, the assistant climbs out of the truck using the provided method.



# Normal Operating Procedures

---

## **Step 8**

Place the platform in its stored position. See "Closing and Storing" under **Normal Operating Procedures (pages 29-30)**.

# Normal Operating Procedures

---

## Proper Cargo Handling Procedures;

### *Single Operator Method:*

\* A second control switch is needed for this method of operation.



### **WARNING**

Platform may crush or pinch. Keep people clear of liftgate when operating.

#### **Step 1**

Open the platform. See “Opening Liftgate Platform” under **Normal Operating Procedures (Pages 18-19)**.

# Normal Operating Procedures

---

## **WARNING**

Cargo placed near the edge of the platform may fall and/or cause excessive wear to the lifting components. Place cargo in the center of the platform to reduce risk of falling and evenly distribute cargo weight.



### **Step 2**

With platform on the ground, begin loading. Place cargo in the center and make sure it is stable. Secure load to help prevent cargo from falling while platform is moving.

## **WARNING**

Riding liftgate may result in severe personal injury or death. Do not ride platform, use the provided methods to enter the truck.



### **Step 3**

Climb into the truck using the provided methods.

# Normal Operating Procedures

---

## CAUTION

Depressing the "UP" button too long may result in personal injury & damage lifting components. Release button immediately once platform reaches the top.

### Step 4

Once inside, raise the platform to the floor of truck by pressing "UP" button on the two button switch located on the **inside** of the truck.



### Step 5

Unload the cargo into the truck.



# Normal Operating Procedures

---



## Step 6

When unloading is complete, lower platform to ground by pressing the “DOWN” button on the two button switch **inside** the truck.



## Step 7

With the platform on the ground, climb out of the truck using the provided methods.

## Step 8

Once use of the liftgate is complete, place the platform in its stored position. See “Closing and Storing” under **Normal Operating Procedures** (pages 29-30).

# Normal Operating Procedures

---

## Closing and Storing the Platform;



### WARNING

Platform may crush or pinch. Keep people clear of liftgate when operating.

#### Step 1

Fold the ramp extension onto the main section of the platform.



#### Step 2

With ramp extension folded, lift platform to vertical position until it touches the opening roller arm.



# Normal Operating Procedures

---



## Step 3

Raise platform by pressing the “UP” button on the two button switch located on the outside of the truck until it reaches the top of the floor extension and platform locks into safety hook.



## WARNING

Platform may open causing severe personal injury and/or death. Before moving truck be sure safety hook is securely locked.

## Step 4

You must check to be sure the platform is locked. To do so, press the “DOWN” button on the two button switch for 3-4 seconds. The platform should lower approximately 1” and stop. This indicates the platform is locked properly. If the platform begins to lower to the ground, you must take the liftgate to your Authorized Service Center to have your lock checked immediately!

Once testing is complete, press the “UP” button on the two button switch for approximately 2-3 seconds to set the lock into its original travel position.

# Deactivating Liftgate

To provide power to the liftgate;



## WARNING

Unauthorized use may result in severe personal injury or death. Deactivate liftgate when finished operating.

*Using the 135 AMP Circuit Breaker:*

### Step 1

**PUSH** red button “**IN**” until the reset lever is fully open.



*Using the Master Disconnect Switch:*

### Step 2

**TURN** the knob to the “**OFF**” position.



# Preventive Maintenance

## Essential Maintenance Inspections;

We strongly recommend using our preventive maintenance schedule as a means of keeping your liftgate running at its best. The *Daily Overall Inspection* should be performed by you the operator, each day. The *Routine Maintenance Schedule* should be performed periodically by a DEL Liftgate Authorized Service Center. By performing your *Daily Overall Inspection* and having *Routine Maintenance Inspections* performed you can ensure years of safe, trouble free operations.

Your first visit to your DEL Liftgate Authorized Service Center should occur once the liftgate has been in operation for 30 days. The importance of this initial inspection is to make sure that everything is working properly during this break in period. Once this is complete, use the chart below as a guide to schedule your liftgate for its routine maintenance inspections:

<i>Cycles Per Day</i>	<i>Operations Performed</i>		
	<i>LOWERING RATED LOAD &amp; LIFTING EMPTY PLATFORM</i>	<i>LIFTING<sup>1/2</sup> RATED LOAD &amp; LOWERING RATED LOAD</i>	<i>LIFTING &amp; LOWERING RATED LOAD</i>
under 20	3 months	2 months	1 month
20 - 40	2 months	1 month	2 weeks
40 - 60	1 month	2 weeks	weekly
over 60	consult DEL	consult DEL	consult DEL

# Preventive Maintenance

---

## Daily Overall Inspection;

### Step 1

Run liftgate through its entire cycle daily. Check for any unusual noises coming from the lift mechanism.



### Step 2

Inspect liftgate for missing or loosened fasteners, broken welds, signs of overload, hydraulic leaks and that pins are in place and secured.

*Any defects need replacement immediately, contact your DEL Liftgate Authorized Service Center.*

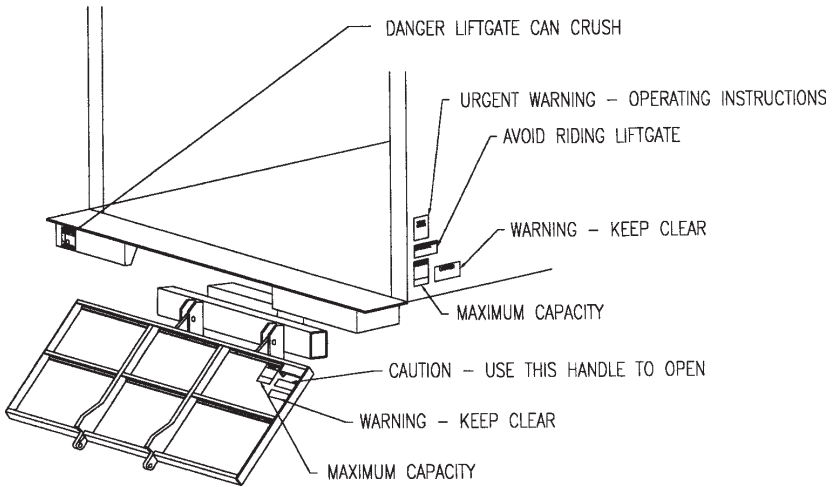


# Preventive Maintenance

## Step 3

Check that all warning decals are in place and legible.

*Any missing or damaged decals need replacement immediately.*




You may obtain free replacement decals by phoning the  
**DEL Office at: 1-800-289-1335**  
(Have your liftgate model # and serial # ready)

**NOTE:** Please fill out the chart provided, as a reminder that these steps have been completed daily. You will find a sample of this chart on the page that follows. Contact your employer to receive a copy to keep in your glove compartment.

# Preventive Maintenance

---

## Sample Daily Check Chart;

 <b>WARNING</b>
Liftgate may malfunction causing severe personal injury or death. Do not operate the liftgate if everything does not check out properly during its daily inspection. Liftgate should be inspected IMMEDIATELY by a DEL Liftgates Authorized Service Center.

Date	Liftgate Cycle Check	Fastener Check	Weld Check	Signs of Overload Check	Hydraulic Leak Check	Safety Decal Check
2/3/99	MS	MS	MS	MS	MS	MS





# Liftgate Warranty Procedure

## DEL Liftgates Keeps You On The Job!

You have just purchased a DEL Liftgate. With careful maintenance and proper operation it should give you years of trouble-free use. If a problem does develop, contact the **DEL Liftgate Factory** directly at **1-800-289-1335** to obtain the name of the DEL Liftgate Authorized Service Center in your area. An Authorized Service Center has the training to service your liftgate.

If you think you have a WARRANTY CLAIM, read the following:

- 1) Carefully read the Warranty Registration Form found with your Operating Instructions and Maintenance Manual. Our warranty is for 3 years on the mechanical structure, 2 years on the entire liftgate against faulty material and workmanship. Parts and labor coverage exists for the first year of the warranty period, parts only after that.
- 2) Your DEL Authorized Service Center will repair your liftgate, and complete a pre-approved factory warranty claim, and get you on the road as quickly as possible. They may invoice you for this service. If the problem is warrantable by DEL Liftgates, DEL Liftgates will issue your Authorized Service Center a credit that will be passed on to you.

# Getting Help

## Need Help?



If you have questions concerning liftgate installation, maintenance, warranty, parts or operation, contact the DEL Liftgates Factory:

**DEL LIFTGATES, Inc.**

190 Lewis Street

Buffalo, NY 1240-6126

Phone: (800) 289-1335

Fax: (716) 854-5424

e-mail: [service@liftgate.com](mailto:service@liftgate.com)

<http://www.liftgate.com>

Keep the name of your local DEL Liftgate Authorized Service Center here for easy access.

NAME:

ADDRESS:

PHONE:

CONTACT PERSON:

# Ordering Parts

---

## Genuine OEM Parts

Each DEL Liftgate is manufactured to stringent quality standards for years of reliable service. To ensure maximum performance of your DEL Liftgate, always specify and use genuine OEM Replacement parts from DEL Liftgates. For more information on DEL Liftgates OEM Parts, request the **Parts Locator Manual**.

## Same Day Parts Availability

Ask your distributor about our **exclusive “Blue Label™”** same day parts program. Place your order as late as **5:00 p.m. Eastern time**, specify **“Blue Label™”** service, and we guarantee same day shipment of stocked parts or we pay the freight.

**Quick Response** *TEAM*

The **Quick Response TEAM** at DEL Liftgates stands ready to provide you with fast action when you need service, parts or technical assistance. Call our customer service department at 1-800-289-1335 Monday - Friday 8:00 a.m. to 5:00 p.m., or reach us 7 days a week through our internet home page ([www.liftgate.com](http://www.liftgate.com)).

Use this space to insert your liftgate reference numbers for easy access.

Serial #
Model #

***Quick Response*** **TEAM**



## **WARNING**

Improper operation of this liftgate may result in severe personal injury or death. DO NOT operate this liftgate without proper instruction and a complete understanding of the procedures in this manual.

**DA Manual Part #25424**

**DA Operator's Manual Revision 05/00**

**This publication replaces all editions bearing an earlier date.**

# **THREE YEAR LIMITED WARRANTY**

DEL liftgates, Inc (herein called the "Company") warrants to Distributor and/or to original purchaser for use, that it will repair F.O.B. its factory in Buffalo, New York or furnish without charge, freight prepaid, a similar genuine part to replace any part of any liftgate sold (herein called the "Liftgate") by the Company which, within twenty four (24) months after the date of sale by Distributor in the case of hydraulic or electrical parts, and within thirty six (36) months after the date of sale by Distributor in the case of all other parts, is proven that all parts claimed defective shall be returned, properly identified, to said factory, freight prepaid. Charges for labor to install such part shall be paid only with respect to parts which, within twelve (12) months after the date of sale by Distributor, are proven to the satisfaction of the Company to have been defective at the time they were sold and shall be paid in accordance with the Company's Flat Rate Schedule and will be reimbursed at a rate to be set by the Company from time to time. This warranty shall be in effect as of May 1, 1995 and will cover only Liftgates sold after that date. The Company's obligation under this warranty shall not include any costs incurred by anyone for consequential damages in any form and, in particular, without restricting the generality of the foregoing, shall not include costs for vehicle towing, road calls or travel time. This warranty is expressly in lieu of all other warranties, expressed or implied, upon which Liftgates are sold. No other warranty has been made or exists.

This warranty applies only to new and unused Liftgates which, after shipment from said factory, have not been altered, changed, repaired or treated in any manner whatsoever. No warranty of any kind applies to Liftgates, or parts thereof, which have been damaged or have failed because of neglect, lack of maintenance, or service, or service, or lubrication, wear, misuse, overloading, accident, or improper installation. No warranty of any kind, statutory, implied or otherwise, shall apply to second-hand or used Liftgates or to new and unused Liftgates which, after shipment from said factory, have been altered, changed, repaired or treated in any manner whatsoever. The integral parts of the Liftgates not manufactured by the Company are covered only by the standard warranty, if any, of the maker of same and the Company assumes no responsibility with respect thereto. No person has any authority to change this warranty in any manner whatsoever and no attempt to repair or promise to repair or improve, any Liftgate made by any representative of the Company shall waive any provision or term of this warranty, or change or extend this warranty in any manner whatsoever.

No claim under this warranty shall be valid unless such claim is submitted to the Company in writing and received by the Company within thirty six (36) months after date of sale by Distributor or within thirty (30) days after discovery of the defect which is the basis of such claim, whichever event shall occur first.