

# Operator's Manual

HD Series  
2,000lb to 8,000lb.  
Capacities

Contact the Quick Response *TEAM* :  
7 days/ 24 hours:  
e-mail-- [QRT@liftgate.com](mailto:QRT@liftgate.com)  
web site--[www.liftgate.com](http://www.liftgate.com)

8:00 am--5:00pm (EST) Monday--Friday:  
voice --1-800-289-1335 (USA)  
--1-416-421-7987(Canada)





## **WARNING**

Improper operation of this liftgate may result in severe personal injury or death. **DO NOT** operate this liftgate without proper instruction and a complete understanding of the procedures in this manual.



**HD Manual Part # 30433**  
**HD Operator's Manual Revision 4/2000**  
**This publication replaces all editions bearing an earlier date.**





## THREE YEAR LIMITED WARRANTY

Canadian Liftgates Inc., (herein called the "Company") warrants to Distributor and/or to original purchaser for use, that it will repair F.O.B. its factory in Toronto, Ontario, or furnish without charge, freight prepaid, a similar genuine part to replace any part of any liftgate sold (herein called the "Liftgate") by the Company which, within thirty six (36) months after the date of sale by Distributor is proven to the satisfaction of the Company to have been defective at the time it was sold, provided that all parts claimed defective shall be returned, properly identified, to said factory, freight prepaid. Charges for labour to install such parts shall be paid only with respect to parts which, within twelve (12) months after the date of sale by Distributor, are proven to the satisfaction of the Company to have been defective at the time they were sold and shall be paid in accordance with the Company's Flat Rate Schedule and will be reimbursed at a rate to be set by the Company from time to time. This warranty shall be in effect as of August 18, 1997 and will cover only Liftgates sold after that date. The Company's obligation under this warranty shall not include any costs incurred by anyone for consequential damages in any form and, in particular, without restricting the generality of the foregoing, shall not include costs for vehicle towing, road calls or travel time. This warranty is expressly in lieu of all other warranties, expressed or implied, upon which Liftgates are sold. No other warranty has been made or exists.

This warranty applies only to new and unused Liftgates which, after shipment from said factory, have not been altered, changed, repaired or treated in any manner whatsoever. No warranty of any kind applies to Liftgates, or parts thereof, which have been damaged or have failed because of neglect, lack of maintenance, or service, or lubrication, wear, misuse, overloading, accident, or improper installation. No warranty of any kind, statutory, implied or otherwise, shall apply to second-hand or used Liftgates or to new and unused Liftgates which, after shipment from said factory, have been altered, changes, repaired or treated in any manner whatsoever. The integral parts of the Liftgates not manufactured by the Company are covered only by the standard warranty, if any, of the maker of same and the Company assumes no responsibility with respect thereto. No person has any authority to change this warranty in any manner whatsoever and no attempt to repair or promise to repair or improve, any Liftgate made by any representative of the Company shall waive any provision or term of this warranty, or change or extend this warranty in any manner whatsoever.

No claim under this warranty shall be valid unless such claim is submitted to the Company in writing and received by the Company within thirty six (36) months after date of sale by Distributor or within thirty (30) days after the discovery of the defect which is the basis of such claim, whichever event shall occur first.



HD Operator's  
Rev. 4/2000

## Ordering Parts

### Genuine OEM Parts

Each Liftgate is manufactured to stringent quality standards for years of reliable service. To ensure maximum performance of your liftgate, always specify and use genuine OEM Replacement parts from us. For more information on ULTRON OEM parts for your liftgate, request the HD Parts Locator Manual.

### Same Day Parts Availability

Ask your distributor about our **exclusive "Blue Label™"** same day parts program. Place your order as late as **5:00 p.m. Eastern time**, specify **"Blue Label™"** service, and we guarantee same day shipment of stocked parts or we pay the freight.





The **Quick Response TEAM** stands ready to provide you with fast action when you need service, parts or technical assistance. Call our customer service department at 1-800-289-1335 (in the U.S.A.) or (416) 421-7987 (in Canada) Monday - Friday 8:00 a.m. to 5:00 p.m., or reach us 7 days a week through our internet home page ([www.liftgate.com](http://www.liftgate.com)).

Use this space to insert your liftgate reference numbers for easy access.

Serial #
Model #



HD Operator's  
Rev. 4/2000

## Liftgate Warranty Procedure

### Ultron Keeps You On The Job!

With careful maintenance and proper operation your liftgate should give you years of trouble-free use. If a problem does develop, contact the **Ultron Factory** directly at **1-800-289-1335** (in U.S.A.) or **416-421-7987** (in Canada) to obtain the name of the Ultron Authorized Service Center in your area. An Ultron Authorized Service Center has the training to service your liftgate.

If you think you have a WARRANTY CLAIM, read the following:

- 1) Carefully read the Warranty Registration Form found with your Operating Instructions and Maintenance Manual. Our warranty is for 3 years on the entire liftgate against faulty material and workmanship. Parts and labor are covered for the first year of the warranty. Parts only are covered after one year, and for the remainder of the warranty period.
- 2) Your Ultron Authorized Service Center will repair your liftgate, and complete a pre-approved factory warranty claim, and get you on the road as quickly as possible. They may invoice you for this service. If the problem is warrantable by us, we will issue your Authorized Service Center a credit that will be passed on to you.

HD Operator's  
Rev. 4/2000

## Getting Help

Need Help?



If you have questions concerning liftgate installation, maintenance, warranty, parts or operation, contact the Ultron Factory:

**In U.S.A.**  
**ULTRON Lift Corp.**  
190 Lewis Street  
Buffalo, NY 1240-6126  
Phone: (800) 289-1335  
(716) 853-7994  
Fax: (716) 854-5424  
e-mail: [service@ultronlift.com](mailto:service@ultronlift.com)  
<http://www.ultronlift.com>

**In Canada:**  
**ULTRON Lift Inc.**  
**Les Hayons ULTRON Inc.**  
12 Industrial Street  
Toronto, ON Canada M4G 1Y9  
Phone: (416) 421-7987  
Fax: (416) 421-7927  
e-mail: [service@ultronlift.com](mailto:service@ultronlift.com)  
<http://www.ultronlift.com>

Keep the name of your Ultron Authorized Service Center here for easy access.

NAME:  
ADDRESS:  
PHONE:  
CONTACT PERSON:





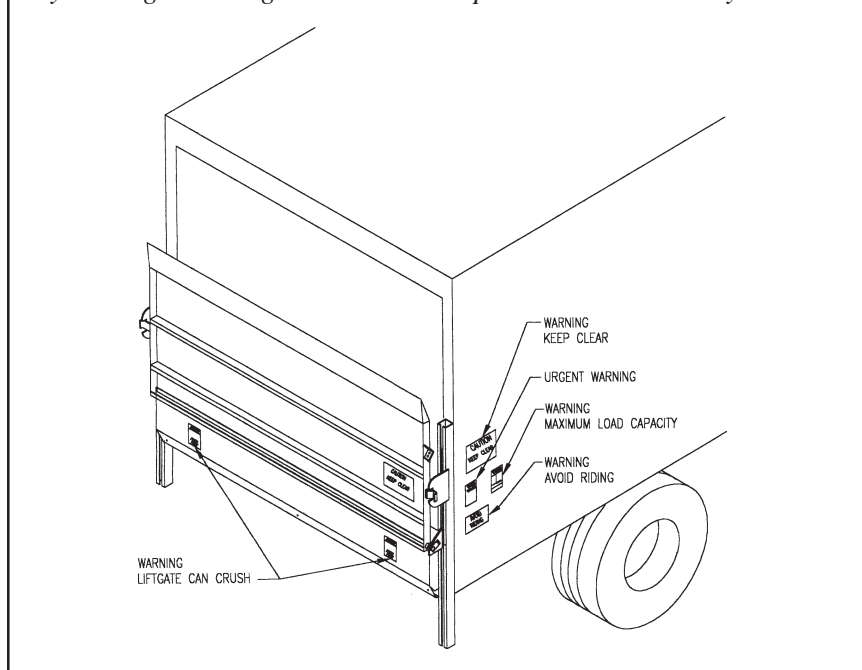
HD Operator's  
Rev. 4/2000

## Preventive Maintenance

### Step 3

Check that all warning decals are in place and legible.

*Any missing or damaged decals need replacement immediately.*



You may obtain free replacement decals by phoning us  
at: **1-800-289-1335 (in U.S.A.), or**  
**416-421-7987 (in Canada)**

(Have your liftgate model # and serial # ready)

**NOTE:** Please fill out the chart provided, as a reminder that these steps have been completed daily. You will find a sample of this chart on the page that follows. Contact your employer to receive a copy to keep in your glove compartment.



HD Operator's  
Rev. 4/2000

# Preventive Maintenance

## Sample Daily Check Chart;

<b>WARNING</b>
Liftgate may malfunction causing severe personal injury or death. Do not operate the liftgate if everything does not check out properly during its daily inspection. Liftgate should be inspected IMMEDIATELY by an Authorized Service Center.

Date	Liftgate Cycle Check	Fastener Check	Weld Check	Signs of Overload Check	Hydraulic Leak Check	Support Chains Check	Safety Decal Check
2/3/99	MS	MS	MS	MS			

## Preventive Maintenance

### Essential Maintenance Inspections;

We strongly recommend using our preventive maintenance schedule as a means of keeping your liftgate running at its best. The *Daily Overall Inspection* should be performed by you the operator, each day. The *Routine Maintenance Schedule* should be performed periodically by an Ultron Authorized Service Center. By performing your *Daily Overall Inspection* and having *Routine Maintenance Inspections*, you can ensure years of safe, trouble free operations.

Your first visit to your Ultron Authorized Service Center should occur once the liftgate has been in operation for 30 days. The importance of this initial inspection is to make sure that everything is working properly during this break in period. Once this is complete, use the chart below as a guide to schedule your liftgate for its routine maintenance inspections:

<i>Cycles Per Day</i>	<i>Operations Performed</i>		
	<i>LOWERING RATED LOAD &amp; LIFTING EMPTY PLATFORM</i>	<i>LIFTING ½ RATED LOAD &amp; LOWERING RATED LOAD</i>	<i>LIFTING &amp; LOWERING RATED LOAD</i>
under 20	3 months	2 months	1 month
20 - 40	2 months	1 month	2 weeks
40 - 60	1 month	2 weeks	weekly
over 60	consult factory	consult factory	consult factory



HD Operator's  
Rev. 4/2000

## Preventive Maintenance

### Daily Overall Inspection;

#### Step 1

Run liftgate through its entire cycle daily. Check for any unusual noises coming from the liftgate or related items such as the power unit.



#### Step 2

Inspect liftgate for missing or loosened fasteners, broken welds, signs of overload, hydraulic leaks and that pins are in place and secured.

*Any defects need replacement immediately, contact your Ultron Authorized Service Center.*



HD Operator's  
Rev. 4/2000

## Normal Operating Procedures

### Step 3

Lower the platform about 2 ft, then close the platform and store it in the lower position following steps 2 thru 4 under **Normal Operating Procedures** ( pages 31-32).



### Step 4

Back the truck up to the rear of the dock until the platform touches the dock. Make sure the wheels are chocked and/or the dock lock is securely in place.



## WARNING

Do not run forklift over platform. Serious hidden damage to liftgate may result in sudden failure and personal injury or death.



### Step 5

Use a dock plate ( If necessary) between the loading dock and the vehicle floor. You are now ready to load or unload the vehicle as necessary



HD Operator's  
Rev. 4/2000

# Normal Operating Procedures



## WARNING

Do not move truck with platform on the ground.  
Liftgate may be torn off or be severely damaged.

### Step 6

Once loading/unloading is complete, remove dock plate, wheel chocks and dock lock. (if necessary)



### Step 7

Move the vehicle away from the dock about 10 ft to change the position of the platform if necessary back to the higher storage for travel. See "Closing and Storing" under **Normal Operating Procedures** (pages 29-30).



GB Operator's  
Rev. 06/99

# Deactivating Liftgate

To cut off power to the liftgate:

 <b>WARNING</b>
Unauthorized use may result in severe personal injury or death. Deactivate liftgate when finished operating.



*Using the Master Disconnect Switch:*

<b>Step1</b> <b>TURN</b> the knob to the “ <b>OFF</b> ” position.	
--	--





HD Operator's  
Rev. 4/2000

## Normal Operating Procedures

Proper Dock Loading Procedures;

*Truck bed is even with loading dock:*

*(Notice: A second person will need to be outside to direct the driver.)*



### **WARNING**

Platform may crush or pinch. Keep people clear of liftgate when operating.

#### **Step 1**

With the platform in its stored position, carefully align the vehicle and back it towards the dock. Stop vehicle about 5-6 feet from the dock.



#### **Step 2**

Remove platform from the **Stored Position**. See "Opening Platform" under **Normal Operating Procedures (pages 18-23)**.

HD Operator's  
Rev. 4/2000

# Normal Operating Procedures

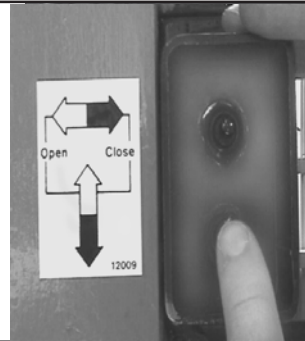
## Closing and Storing the Platform;

### **WARNING**

Platform may crush or pinch. Keep people clear of liftgate when operating.

#### **Step 1**

Raise the platform to the desired height. If second storage position is desired, raise platform to the vehicle bed by pressing the "UP" toggle on the Control Switch. If "dock" storage is desired, raise platform to within 2 ft of truck floor.



#### **Step 2**

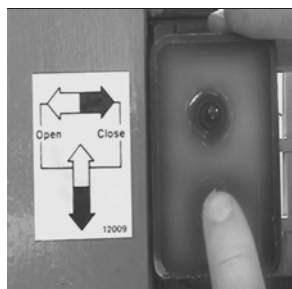
Using two hands, push the "OPEN" & "CLOSE" toggles simultaneously to close the platform.



HD Operator's  
Rev. 4/2000

# Normal Operating Procedures

*[Power Open and Close:]*



## Step 3

Lower platform by pressing the  
“DOWN” button  
until the travel ear  
drops into the travel plate completely.

## Step 4

[Once closed, position the toggle switch  
to the “DOWN” position on the two  
toggle marine switch so the travel ear  
drops into the travel plate.] Slide lock bar  
in place.

HD Operator's  
Rev. 4/2000

# Normal Operating Procedures

## Step 6

When unloading is complete, lower the platform to the ground using the Toggle marked "Down" located inside vehicle body.



## Step 7

Unlock the ramp, lower it to the ground and unload the platform. Step 2 thru Step 7 may be repeated several times as needed to unload the cargo from the vehicle.





HD Operator's  
Rev. 4/2000

# Normal Operating Procedures

---

## Step 8

Once use of the liftgate is complete, place the platform in its stored position. See "Closing and Storing" under **Normal Operating Procedures** (pages 29-31).



# Normal Operating Procedures

## Proper Cargo Handling Procedures;

*[Single Operator*

*Method:*

\* A second control is located in the trailer to operate the liftgate using this method.]



### WARNING

Platform may crush or pinch. Keep people clear of liftgate when operating.

#### Step 1

Open the platform. See "Opening Liftgate Platform" under **Normal Operating Procedures (Pages 18 & 19)**.



### WARNING

Riding liftgate may result in severe personal injury or death. Do not ride platform in such a manner that a fall would endanger you.???

#### Step 2

With the platform open, raise the flip ramp to the vertical locked position. Stand on the platform in such a manner that there is no danger of falling and use the liftgate platform to raise yourself to the vehicle bed level .

# Normal Operating Procedures

## CAUTION

Depressing the "UP" button too long may result in personal injury & damage lifting components. Release button immediately once platform reaches the top.



### [Step 3

The operator then raises the platform to the bed of the trailer by pressing the "UP" toggle located inside the trailer. ]

## CAUTION

Cargo placed near the edge of platform may fall and/or cause excessive wear to the lifting components. Place cargo in center of the platform to reduce risk of falling and evenly distribute weight.



### Step 5

The operator now loads the cargo from the vehicle onto the platform.

# Normal Operating Procedures

## [Step 6

Once complete, the assistant advises the operator to lower the platform to the ground. Using the Toggle marked "Down" the operator lowers the load to the ground.]



**[Note:** This Liftgate is equipped with an overload pressure switch to prevent overloading of platform. The platform automatically stops lowering if the platform is overloaded and an alarm sounds. If this happens, you must raise the load back up to the floor of the truck and the assistant must unload cargo to reduce the weight on the platform.]

## [Step 7

With the platform on the ground, the operator unlocks the ramp and lowers it to the ground and proceeds to unload the platform. Step 3 thru Step 7 may be repeated several times as needed to unload the cargo from the trailer.]





HD Operator's  
Rev. 4/2000

# Normal Operating Procedures

---

## [Step 8

Once use of the liftgate is complete,  
place the platform in its stored position.  
See "Closing and Storing" under  
**Normal Operating Procedures**  
(pages 31-32). ]





HD Operator's  
Rev. 4/2000

# Normal Operating Procedures

## Proper Cargo Handling Procedures; *[Preferred Method:]*



### WARNING

Platform may crush or pinch. Keep people clear of liftgate when operating.

#### [Step 1

Open the platform. See "Opening Liftgate Platform" under **Normal Operating Procedures (Pages 18 & 19).**]

#### [Step 2

With the platform on the ground, the assistant enters the truck using the provided side step and grab handle.]



#### [Step 3

Once the assistant is in the trailer, the ground operator raises the flip ramp to the vertical locked position. ]

# Normal Operating Procedures

## CAUTION

Depressing the "UP" toggle too long may result in personal injury & damage lifting components. Release toggle immediately once platform reaches the top.



### [Step 4

The operator then raises the platform to the bed of the truck by pressing the "UP" toggle located on the passengers side on the outside of the trailer. ]

## CAUTION

Cargo placed near the edge of platform may fall and/or cause excessive wear to the lifting components. Place cargo in the center of the platform to reduce risk of falling and evenly distribute weight.



### [Step 5

The assistant now loads the cargo from the trailer onto the platform.]

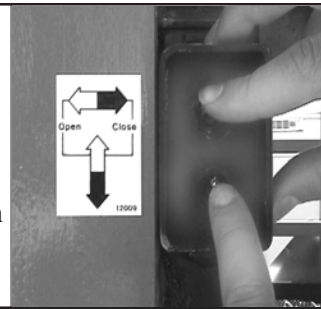
# Normal Operating Procedures

## **WARNING**

Platform may crush or pinch. Keep people clear of liftgate while operating.

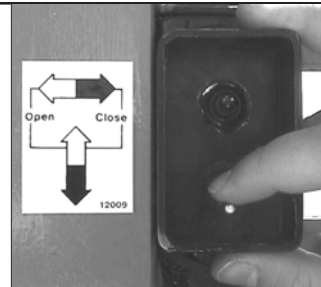
### Step 3

Open the platform by positioning the lower toggle switch to the "UP" position with one hand, while simultaneously positioning the second toggle to the "OPEN" position with the other hand.



### Step 4

Lower the platform to the ground by positioning the lower switch to the "DOWN" position.



### Step 5

Begin loading the truck. See "Proper Cargo Handling Procedures" under **Normal Operating Procedures** (pages 22-30).



HD Operator's  
Rev. 4/2000

# Normal Operating Procedures

## Proper Cargo Handling Procedures;



### **WARNING**

[Riding liftgate may result in severe personal injury or death. Do not ride platform, use the provided methods to enter the truck.]

[To avoid riding the liftgate, two operating procedures have been designed to fit your particular situation. They are as follows:

***Preferred Method:*** With this method, you will have an operator and an assistant to load and unload the truck. The operator is on the ground loading and the assistant is inside the truck unloading,

***Single Operator Method:*** With this method, you will only use one operator to load and unload the truck. This procedure requires you to have two switches; one mounted inside the truck and one mounted outside the truck.

*(Contact the Factory if you do not have a second switch.)*

HD Operator's  
Rev. 04/2000

## Activating Liftgate

To provide power to the liftgate:

### **WARNING**

Improper use of the liftgate may result in serious injury or death. DO NOT operate this liftgate without being properly instructed and understand this manual.



*Using the Master Disconnect Switch:*

#### **Step 1**

**TURN** the knob to the **ON** position.



# Normal Operating Procedures

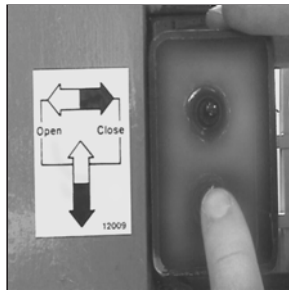
## Opening Liftgate Platform;

### **WARNING**

Platform may crush or pinch. Keep people clear of liftgate while operating.

#### **Step 1**

Unlock the platform from the travel position by sliding the lock back, clearing the travel ear. These bars are located on both sides.



#### **Step 2**

Stand on side of truck by Control Switch. Raise platform by positioning the lower toggle switch to the "UP" position until the travel ear clears the drop-in plate.

# Safety

---

## *Operate Safely*

- ⇒ Run liftgate through a full cycle before operating every day; inspect liftgate for missing or loosened fasteners, broken welds, signs of overload; and check that all decals are in their proper place and legible.
- ⇒ Clear area of any objects that may be pinched or crushed. Keep people out of work area. Stop operating liftgate if anyone enters the area.
- ⇒ If you hit anything with the liftgate - STOP immediately! Remove object and inspect damage. Make any repairs before you operate liftgate again.
- ⇒ DO NOT leave liftgate activated or platform open when unattended.
- ⇒ DO NOT allow an untrained person to operate the liftgate.

## *Help Prevent Serious Injury Or Fatal Accidents*

- ⇒ [DO NOT ride the liftgate at anytime or use platform when it is not on the ground as a step into the truck. Riders risk the chance of being thrown off the liftgate if it fails. ]
- ⇒ Disconnect power to the liftgate after every use using the Master Disconnect Switch in the cab of the truck.

## Safety

---

- ⇒ DO NOT run a forklift or other heavy machinery over the platform at anytime.
- ⇒ DO NOT use the liftgate for any other reason than loading or unloading cargo.
- ⇒ DO NOT operate the liftgate if you are under the influence of drugs or alcohol.

### *Loading And Unloading Safely*

- ⇒ Be sure to operate liftgate on a level surface.
- ⇒ When backing truck to loading dock, do not hit the dock. Have a second person outside the truck directing you.

### *Using The Control Switch*

- ⇒ DO NOT depress the "UP" button for any longer than necessary to perform the desired function. Release the button immediately once the platform reaches its full height. Failure to release button immediately may cause hidden damage to liftgate components causing the liftgate to fail unexpectedly.
- ⇒ DO NOT "jerk" the liftgate by pressing the "Up/Down" buttons too quickly. The sudden movement may cause the cargo to become unstable and/ or fall.

{some warning re POC operation??}

## Abnormal & Unsafe Practices

### **WARNING**

Improper use of the liftgate may result in severe damage to liftgate and/or severe personal injury or death. Never use liftgate for anything other than its designed use of loading/unloading cargo.

The following are unsafe practices that may cause hidden damage to the liftgate creating the risk of serious personal injury or death:

- Using the liftgate as a jack
- Using the liftgate to pull, push, or tow objects
- Using force of the hydraulic system to bend, shear, or break objects
- Using the liftgate to plow snow
- Driving a forklift over the liftgate
- Driving the truck with platform open

[The following unsafe practices may result in serious personal injury or death:

- Riding the liftgate
- Using the platform as a step into the truck bed]



HD Operator's  
Rev. 4/2000

# Safety

**DANGER, WARNING, and CAUTION** are “signal words” that identify the level of risk or hazard involved in an operation or step. The signal word will accompany a “SAFETY ALERT SYMBOL”



Immediate hazards which **WILL** result in severe personal injury or death.



**DANGER**

Hazards or unsafe practices which **COULD** result in severe personal injury or death.



**WARNING**

Hazards or unsafe practices which **COULD** result in minor personal injury or product or property damage.



**CAUTION**

## Limits of Operation & Use

### SAFETY INSTRUCTIONS

Before operating liftgate be sure to understand these instructions below:

1. Improper operation of this lift can result in serious personal injury. **DO NOT OPERATE** unless you have been properly instructed and have read, and are familiar with, the operating instructions. If you do not have a copy of the instructions please obtain them from your employer, distributor, or lessor, as appropriate, before you attempt to operate the lift.
2. Be certain the vehicle is properly and securely braked before using the lift.
3. Always inspect this lift for maintenance or damage before using it. If there are signs of improper maintenance, damage to vital parts, or slippery platform surface, do not use the lift. **DO NOT** attempt your own repairs, unless you are specifically trained.
4. **DO NOT OVERLOAD.** See Maximum Capacity Load Decal for the rated load. Remember that this limit applies to both raising and lowering operations.
5. Each load should be placed in a stable position as near as possible to the **CENTER** of the platform.

## Limits of Operation & Use

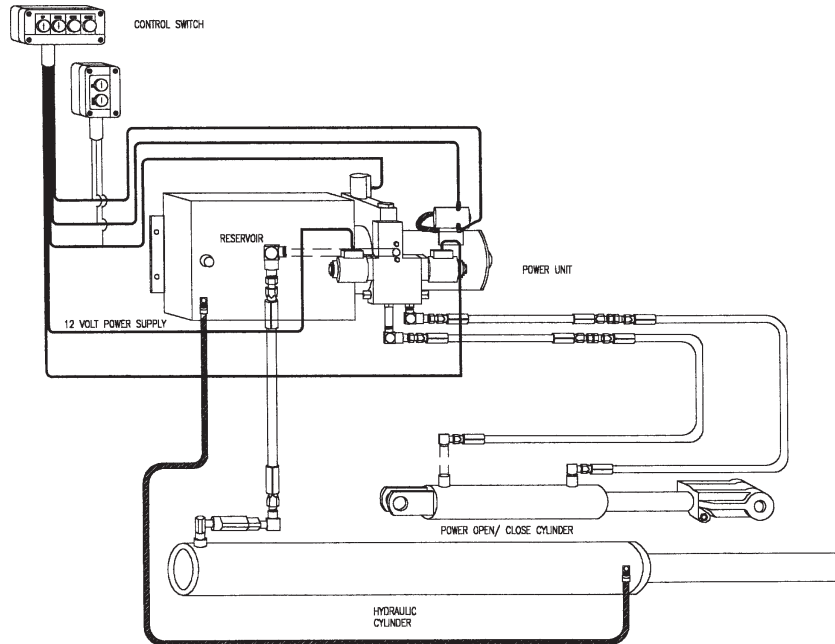
### SAFETY INSTRUCTIONS

6. Keep people clear of liftgate while operating. **NEVER STAND** in or move through or allow anyone else to stand in or move through the area in which the lift may operate or into which an upset load might fall.
  
- [7. **DO NOT RIDE** the liftgate. This is **NOT** a passenger lift. Unstable loads or failure of the liftgate would endanger you. *This liftgate is not equipped with a back-up system to prevent the liftgate from falling in the event of a failure.*]
  
8. Ensure all decals are legible and in their correct locations. If you require replacement decals contact the **factory**. Read all safety decals before operating the liftgate.

HD Operator's  
Rev. 4/2000

# Design Detail

This is a general drawing of the power system for most HD style liftgates.





HD Operator's  
Rev. 4/2000

## Special Features

We have developed the new low maintenance features for our liftgates by listening to you - our customers. Our low maintenance liftgates are value engineered to reduce maintenance cost and downtime while increasing productivity. Our special features include:

***Maintenance Free Bushings*** at all major hinge points - These bushings replace grease fittings that were traditionally high maintenance items. These new bushings significantly reduce maintenance cost and downtime.

***Rubber Booted Marine Style Toggle Controls*** - In order to help prevent freezing and obstacles from jamming the control buttons, all liftgates feature Marine Style Toggle Controls with rubber seals.

***Pressure Compensated Flow Valve*** - This valve ensures that the platform descent is controlled at any load capacity or in the event of a damaged hose.

***Close Relief Valve*** - This is a safety device that prevents an operator from inadvertently closing the platform when it's loaded.

***135 Amp Circuit Breaker***- The electrical safety feature is designed to cut power from the battery in cases of short circuit.

We are always interested in hearing your comments and suggestions especially to improve our products, please contact us at **(in the U.S.A.) 1-800-289-1335 or (in Canada) 416-421-7987** or on our internet page ([www.ultronlift.com](http://www.ultronlift.com)) anytime. If we are not there leave a message and we will get back to you as soon as possible.

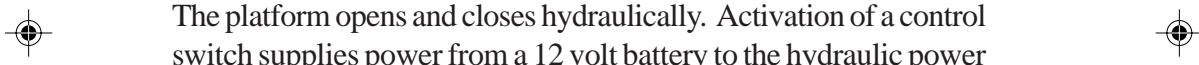


HD Operator's  
Rev. 4/2000

## Theory of Operation

The HD style liftgate is designed to lift cargo vertically from the truck bed to the ground or dock, and vice-versa. Power is provided by a hydraulic power unit and cylinder, which in turn activates a chain and sprocket system. Activation of a control switch supplies power from a 12 volt battery to the hydraulic power unit. The hydraulic power unit in turn supplies pressurized hydraulic fluid to the hydraulic cylinder. The cylinder extends, tensioning the chains which are attached to the platform. The resultant upward pull on the platform raises it.

The platform is lowered by gravity. Activation of the control switch releases the hydraulic fluid back to the power unit from the cylinder. The cylinder retracts releasing the tension in the chain and the platform lowers by its own weight.



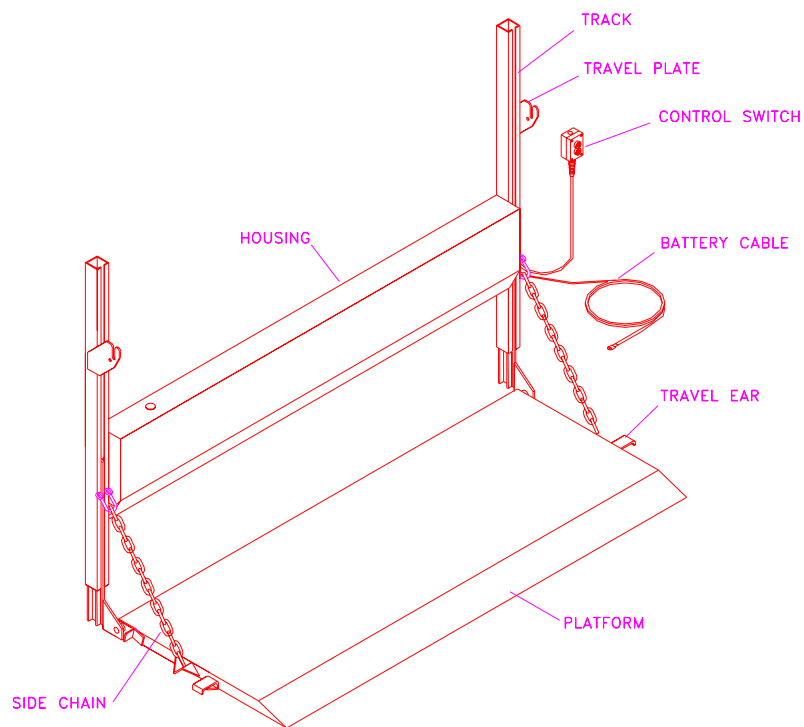
The platform opens and closes hydraulically. Activation of a control switch supplies power from a 12 volt battery to the hydraulic power unit. The hydraulic power unit in turn supplies pressurized hydraulic fluid to the hydraulic power open/close cylinder. The cylinder extends, opening the platform. Retracting the cylinder closes the platform.



HD Operator's  
Rev. 4/2000

## Design Detail

This is a drawing of a HD Series liftgate with descriptions of the common parts.



# Scope Of This Manual

---

## Model Number

The code and model numbers of a liftgate are references to its size, type and capacity.

HD 60 60 F  
1 2 3 4



### 1. Liftgate type

HD = Style Liftgate

### 2. Weight capacity

60 = 6000 lb. capacity

### 3. Depth of platform

*(not including ramp)*

60 = 60" of platform loading area

### 4. Type of Platform

F = Folding Platform



HD Operator's  
Rev. 4/2000

## **HD Series Liftgate Description**

The HD Series liftgate is a 100% level ride, rail-style liftgate. This style liftgate is available in the range of capacities from 2,000 lbs. up to and including 8,000 lbs. Rail-style liftgates are made of two rails mounted to the rear of your truck, either by welding or by bolting. These rails support the platform on which you raise your cargo.

Depending on what type of HD Series liftgate you have, it may or may not lift above the floor of your truck. Models that will lift above the truck floor will have one of the following denotations at the end of the model number: TML, AF, ML, or M. Here is an example:

**HD 40 60 AF**

### **Important Safety Features**

- Pressure compensated flow valve
- Dual Lift Chains
- Treadplate platform
- Toe Guard in housing cover
- Platform safety lock
- Heavy duty platform hinge
- Warning decals and manuals



HD Operator's  
Rev. 4/2000

# Table Of Contents

---

## Proper Cargo Loading Procedures

Two Operator Method .....	21
Single Operator Method .....	25

Closing and Storing Platform .....	29
------------------------------------	----

<u>Deactivating Liftgate</u> .....	31
------------------------------------	----

## Dock Loading Procedures

Truck bed is even with loading dock .....	32
---	----

## Preventive Maintenance

Essential Maintenance Inspections .....	36
Daily Overall Inspection .....	37
Sample Daily Chart .....	39
Daily Check Chart .....	40

<u>Liftgate Warranty Procedure</u> .....	42
--	----

<u>Getting Help</u> .....	43
---------------------------	----

<u>Ordering Parts</u> .....	50
-----------------------------	----

## Scope Of This Manual

We have designed this manual to illustrate the steps needed for the basic operation of our HD Series liftgates. It also provides safety information and simple preventive maintenance tips.

***NOTE: This manual is not intended for use as a repair or troubleshooting guide.***

This manual has been designed for use in conjunction with the **HD Series liftgate only**. These are Rail style liftgates with capacities of 2000 lb. up to and including 8000 lb. To determine the type of liftgate you have:

- 1) *Refer to the serial number tag on the liftgate. The area labeled "Model Number" (see page 5 of this manual) will have a "HD" denotation in the prefix of the model number if it is a HD series liftgate;*
- 2) *Ask your employer or lessor;*
- 3) *Call your Ultron Authorized Service Center for assistance;*
- 4) *Call us for assistance at (in the U.S.A) 1-800-289-1335 or (in Canada) 416-421-7987. You can also contact us by fax, or on the internet - <http://www.QRTLiftgate.com>*

If you are experiencing difficulty or are in need of repair, contact the Ultron Factory for information on the experienced and trained Ultron Authorized Service Center in your area.

***Replacement manuals are available, just call us and order part # 30433***

HD Operator's  
Rev. 4/2000

## Introduction

**Thank you** for purchasing one of our liftgates. Your liftgate is an example of the finest engineering in the industry and, with proper care and operation, will serve your needs for years. Not only have you purchased one of our liftgates; we feel you have entered into a partnership with us.

To begin our partnership we welcome you to the Ultron Team and assure you your continuous satisfaction with our product is most important to us. Our **Quick Response TEAM** stands ready to provide you with fast action when you need sales, parts, or technical assistance. You can call our customer service department Monday - Friday 8 a.m. to 5 p.m. Eastern Time or reach us 24 hours a day, 7 days a week through our internet home page ([www.QRTLiftgate.com](http://www.QRTLiftgate.com)) or voice message system. Providing quality, value, and service to our customers is what our business is all about.

Read this manual carefully to learn how to operate and care for your liftgate properly. Maintenance (other than the simple routine maintenance we ask you to perform within this manual), inspections, and repairs must be completed by an **Ultron Authorized Service Center only**. If you do not know who the Ultron Authorized Service Center in your area is, please contact us at:

**In the U.S.A.:**

**Ultron Lift Corp.**

P.O. Box 6126 \* 190 Lewis St.  
Buffalo, NY 14240-6126  
Phone: (800) 289-1335 or  
(716) 853-7994  
Fax: (716) 854-5424  
<http://www.ultronlift.com>  
e-mail: [service@liftgate.com](mailto:service@liftgate.com)

**In Canada:**

**Ultron Lift Inc.**

**Les Hayons Ultron Inc.**  
12 Industrial Street  
Toronto, ON Canada M4G 1Y9  
Phone: (416) 421-7987  
Fax: (416) 421-7927  
<http://www.ultronlift.com>  
e-mail: [service@liftgate.com](mailto:service@liftgate.com)

# Table Of Contents

<b>Description</b>	<b>Page</b>
<u>Introduction</u> .....	1
<u>Table of Contents</u> .....	2
<u>Scope of this Manual</u> .....	4
<u>Description of HD Series Liftgates</u> .....	6
<u>Theory of Operation</u> .....	7
<u>Design Detail</u> .....	8
<u>Special Features</u> .....	10
<u>Limits of Operation &amp; Use</u> .....	11
<u>Abnormal &amp; Unsafe Practices</u> .....	13
<u>Safety</u> .....	14
<u>Activating Liftgate</u> .....	17
<u>Normal Operating Procedures</u>	
Opening the Platform .....	18